

**EPS15R Antibody (N-term)**  
**Purified Rabbit Polyclonal Antibody (Pab)**  
**Catalog # AP2160a****Specification**

---

**EPS15R Antibody (N-term) - Product Information**

Application	WB,E
Primary Accession	<a href="#">Q9UBC2</a>
Reactivity	Human
Host	Rabbit
Clonality	Polyclonal
Isotype	Rabbit IgG
Calculated MW	94255
Antigen Region	186-216

**EPS15R Antibody (N-term) - Additional Information****Gene ID** 58513**Other Names**

Epidermal growth factor receptor substrate 15-like 1, Eps15-related protein, Eps15R, EPS15L1, EPS15R

**Target/Specificity**

This EPS15R antibody is generated from rabbits immunized with a KLH conjugated synthetic peptide between 186-216 amino acids from the N-terminal region of human EPS15R.

**Dilution**

WB~~1:1000

E~~Use at an assay dependent concentration.

**Format**

Purified polyclonal antibody supplied in PBS with 0.09% (W/V) sodium azide. This antibody is prepared by Saturated Ammonium Sulfate (SAS) precipitation followed by dialysis against PBS.

**Storage**

Maintain refrigerated at 2-8°C for up to 2 weeks. For long term storage store at -20°C in small aliquots to prevent freeze-thaw cycles.

**Precautions**

EPS15R Antibody (N-term) is for research use only and not for use in diagnostic or therapeutic procedures.

**EPS15R Antibody (N-term) - Protein Information****Name** EPS15L1**Synonyms** EPS15R

**Function** Seems to be a constitutive component of clathrin-coated pits that is required for receptor-mediated endocytosis. Involved in endocytosis of integrin beta-1 (ITGB1) and transferrin receptor (TFR); internalization of ITGB1 as DAB2-dependent cargo but not TFR seems to require association with DAB2.

#### **Cellular Location**

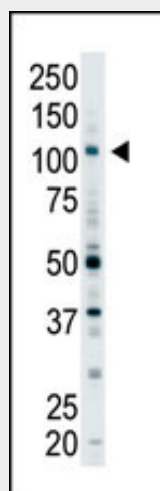
Cell membrane; Peripheral membrane protein. Nucleus. Membrane, coated pit. Note=Localized to plasma membrane coated pits

#### **EPS15R Antibody (N-term) - Protocols**

Provided below are standard protocols that you may find useful for product applications.

- [Western Blot](#)
- [Blocking Peptides](#)
- [Dot Blot](#)
- [Immunohistochemistry](#)
- [Immunofluorescence](#)
- [Immunoprecipitation](#)
- [Flow Cytometry](#)
- [Cell Culture](#)

#### **EPS15R Antibody (N-term) - Images**



The anti-EPS15R Pab (Cat. #AP2160a) is used in Western blot to detect EPS15R in Y79 cell lysate.

#### **EPS15R Antibody (N-term) - Background**

Ubiquitin is a 76 amino acid highly conserved eukaryotic polypeptide that selectively marks cellular proteins for proteolytic degradation by the 26S proteasome. The process of target selection, covalent attachment and shuttle to the 26S proteasome is a vital means of regulating the concentrations of key regulatory proteins in the cell by limiting their lifespans. Polyubiquitination is a common feature of this modification. Serial steps for modification include the activation of ubiquitin, an ATP-dependent formation of a thioester bond between ubiquitin and the enzyme E1, transfer by transacylation of ubiquitin from E1 to the ubiquitin conjugating enzyme E2, and covalent linkage to the target protein directly by E2 or via E3 ligase enzyme. Deubiquitination enzymes also exist to reverse the marking of protein substrates. Posttranslational tagging by Ub is involved in a multitude of cellular processes, including the cell cycle, cell growth and differentiation, embryogenesis, apoptosis, signal transduction, DNA repair, regulation of transcription and DNA

replication, transmembrane transport, stress responses, the immune response, and nervous system functions.

#### **EPS15R Antibody (N-term) - References**

J Biol Chem. 2002 Aug 23;277(34):30746-53.  
J Biol Chem. 2002 Mar 15;277(11):8941-8.  
J Biol Chem. 1998 Jan 30;273(5):3003-12.  
Cancer Res. 1997 Dec 15;57(24):5498-504.  
J Biol Chem. 1995 Jun 23;270(25):15341-7.